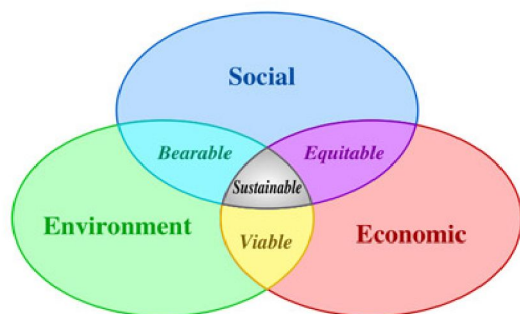




1/13

ServOnOff ***Software presentation***

- Optimize power consumption of computers.
- Increase lifetime of computers.
- Energy dashboard communication .

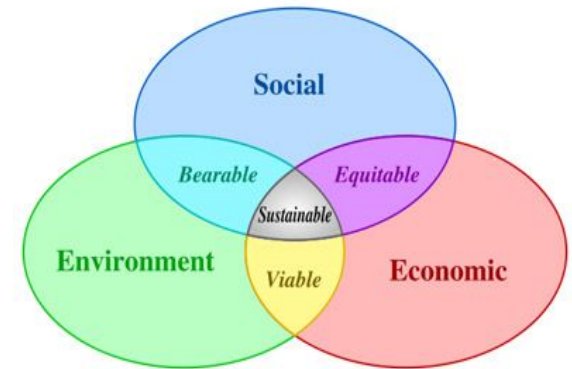




2/13

Green IT

- Green IT, is the application of the theory of sustainable development to Information Technology.
- Two mains actions :
 - Computer power consumption reduction,
 - WEEE (Waste Electrical and Electronic Equipment) management of this industry by optimizing : time and life cycle, remanufacturing, recycling ...



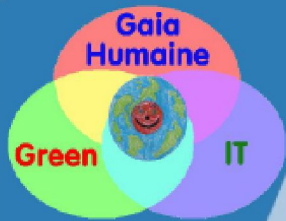


3/13

ServOnOff and Green IT

- Scheduling shutdown and reboot of computers in a network area:
 - ServOnOff decreases, thereby, the cost of electrical energy needed to supply computers.
- Optimizing the operation of computers by centralizing tasks of cleaning and maintenance software:
 - By optimizing their operation, lifetime of computers increases, thus delaying their replacement ...

• • • • • • • • • •



4/13

Power consumption reduction

We call : "insomniac computer"

- a computer running 24 hours on 24 and 7 days / 7.
- Knowing that his hours of actual use are rather than 10 hours per day, 5 days a week.

ServOnOff reduces the cost of electricity, managing the stops, of night and weekend of "insomniac computers"!





5/13

Insomniac computer: annual cost

- It works 5876 hours unnecessarily,
- It unnecessarily consumes 588 kWh (Avg. pow. 100 Watt)
- It costs unnecessarily 76€ VAT (Europe : 0.13€ per kWh)
- It produces 252 kg of CO₂ needlessly (Europe: 0.43 kg/ kWh)

In Europe, 8 insomniac computers produce as much CO₂ as a "standard car" ...

• • • • • • • • • •

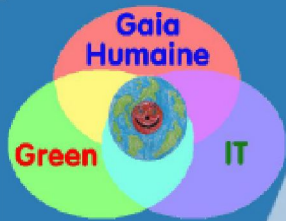


6/13

Computers lifetime increase

- The basic functions of desktop management:
 - **Deploying** and running applications on computers (ServOnOff keeps all Log)
 - Inventory of computers,
 - Computers remote access.
- This is the part of desktop management **deployment**, that allowed to optimize the operation of computers.
- This optimization reduces indirectly WEEE ...

• • • • • • • • • •



7/13

Green IT and desktop management

- Here's a scenario combining these two approaches:
 - ServOnOff planned termination of computers to 20 hours
 - He then wakes up your computers to 23 hours
 - It performs an update of your software
 - It runs a defragmentation of the partition C:
 - He turns off your park at the end of treatment,
 - It turns on your park at 7 o'clock in the morning.





8/13

ServOnOff : energy dashboard

Consumption estimation of your computers:

- Different informations: kWh, €, kgCO2, "tree"
- Different periods: day, night and weekend,
- By: day, week, month, quarter, semester, year ...

NETWORK

251,30 ☒ kWh

28,90 ☐ € TTC

22,62 ☐ kg CO2

8 ☐ Trees


2 184 kWh Max.

386 kWh Gain

☒ day ☒ night+WE

Consumption in 1 :

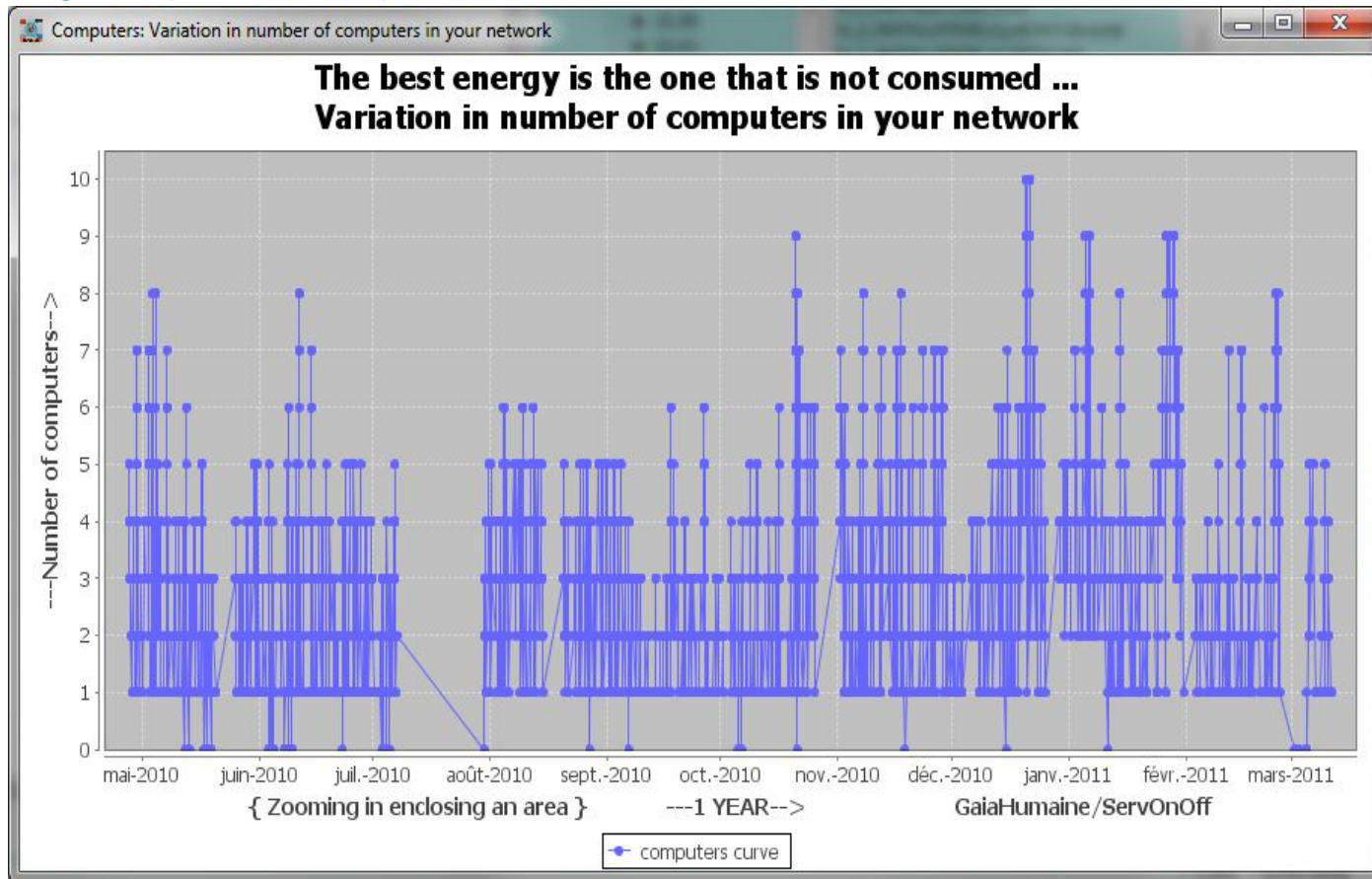
▼

 0001



Base curve of energy dashboard

ServOnOff based on this type of graph, by scanning your network regularly, to supply the dashboard:



NETWORK

251,30 ☒ kWh

28,90 ☐ € TTC

22,62 ☐ kg CO2

8 ☐ Trees

2 184 kWh Max.

386 kWh Gain

☒ day ☒ night+WE

Consumption in 1 :

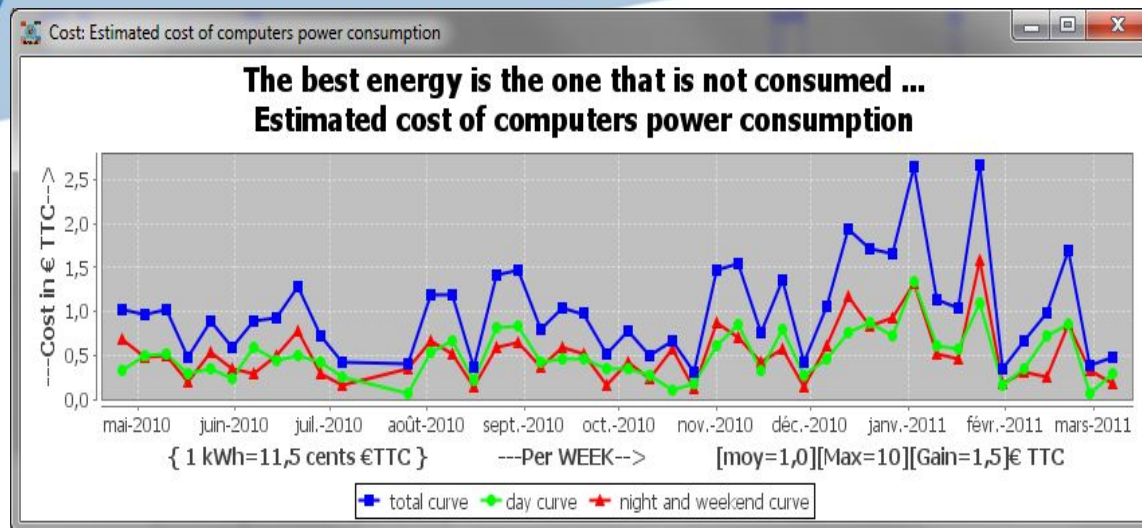
semester

 0001



Graphs calculated by the energy dashboard

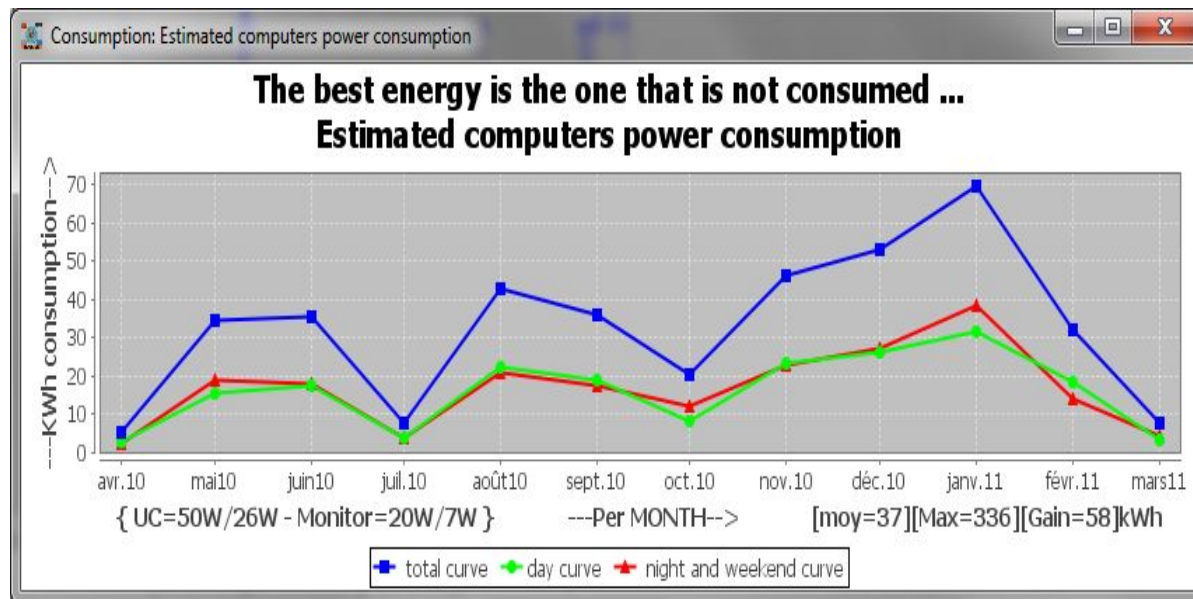
10/13



Curve in € VAT per week

“ Two examples ”

Curve in kWh per day





11/13

Conclusion

With ServOnOff you can :

- reduce your electricity bill,
- reduce your CO2 emissions,
- increase the lifetime of your computers, and thus reduce your WEEE,
- benefit from an energy dashboard in order to communicate about your ecocitizen approach.

The best energy is the one that is not consumed ...





12/13

Annexe 1 : operating systems

- **ServOnOff** manages these client computers :
 - Windows 2000,
 - Windows XP Professional,
 - Windows Vista Professional and Family,
 - Windows Seven Professional and Family.
- *ServOnOff is installed on a computer acting as a server. Its operating system can be:*
 - *one of the 4 mentioned above,*
 - *Windows 2000Server, 2003Server ou 2008Server.*
- *ServOnOff, for its operation, does not install anything on clients.*

• • • • • • • • • •



13/13

Annexe 2 : *ServOnOff* deploys 130 softwares (*)

- *The table presents some of them (130 currently) :*
 - *ServOnOff can manage all software installed by command line,*
 - *We can help you deploy your own software.*

•Skype®	•7-Zip®	• Adobe FlashPlayer®
•GooGle Chrome®	•Aida32®	• Adobe Reader®
•Google Sketchup®	•AntRenamer®	• Adobe Shockwave®
•Google Picasa®	•Audacity®	
•Microsoft WindowsLive	•CCleaner®	•CATIA®
•Microsoft ServicePack®	•CpuZ®	•CATIA_P1®
	•FormatFactory®	•CATIA_P3®
•Mozilla Firefox®	•Foxit®	•DELMIA®
•Mozilla Thunderbird®	•FSViewer®	•ENOVIA_DMU_Navigator®
•Mozilla Aurora®	•JkDefrag®	•HOTFIX®
	•MyDefrag®	•SERVICE_PACK®
•QuickTime®	•NHC®	
	•Notepad++®	•Oracle Java JRE
•OpenOffice®	•UltraVNC®	•Oracle Java JDK
	•VLC®	
	•FileZilla®	

(*) These software are trademarks of their respective owners.